

Wet Weather Analysis #1  
250 CFS Wet Weather Capture  
No Dry Weather Capture  
No Storage

DRAFT – FOR DISCUSSION PURPOSES ONLY

~45,000AF OF INITIAL  
CAPTURE BEFORE FULL  
STORAGE COMES ON LINE

# Annual Summary

## 250 CFS Wet Weather; No Dry Weather; No Storage

Year	Incoming Volume (ac-ft)	Flow Downstream (ac-ft)	Captured Volume (ac-ft)	Capture Fraction
1987	155,301	122,257	33,029	21%
1988	174,250	131,682	42,529	24%
1989	101,137	75,796	25,286	25%
1990	119,705	92,069	27,740	23%
1991	233,017	193,830	39,147	17%
1992	505,451	438,455	66,870	13%
1993	610,658	541,260	69,568	11%
1994	131,878	99,667	32,207	24%
1995	508,090	437,564	70,522	14%
1996	235,300	181,528	53,668	23%
1997	187,260	140,305	47,053	25%
1998	541,530	464,309	77,231	14%
1999	115,455	85,855	29,557	26%
2000	205,220	160,123	45,142	22%
2001	258,553	204,727	53,821	21%
2002	114,383	93,835	20,545	18%
2003	209,167	167,064	42,039	20%
2004	276,323	231,225	44,845	16%
2005	667,818	596,159	71,422	11%
2006	172,902	128,663	44,802	26%
2007	94,986	80,304	14,682	15%
2008	234,016	193,361	40,651	17%
2009	148,063	122,766	25,287	17%
2010	302,277	250,278	51,915	17%
2011	247,239	198,475	48,867	20%
<b>Total</b>	<b>6,549,979</b>	<b>5,431,556</b>	<b>1,118,423</b>	<b>17%</b>
<b>Average</b>	<b>261,999</b>	<b>217,262</b>	<b>44,737</b>	<b>17%</b>

12/12/2015

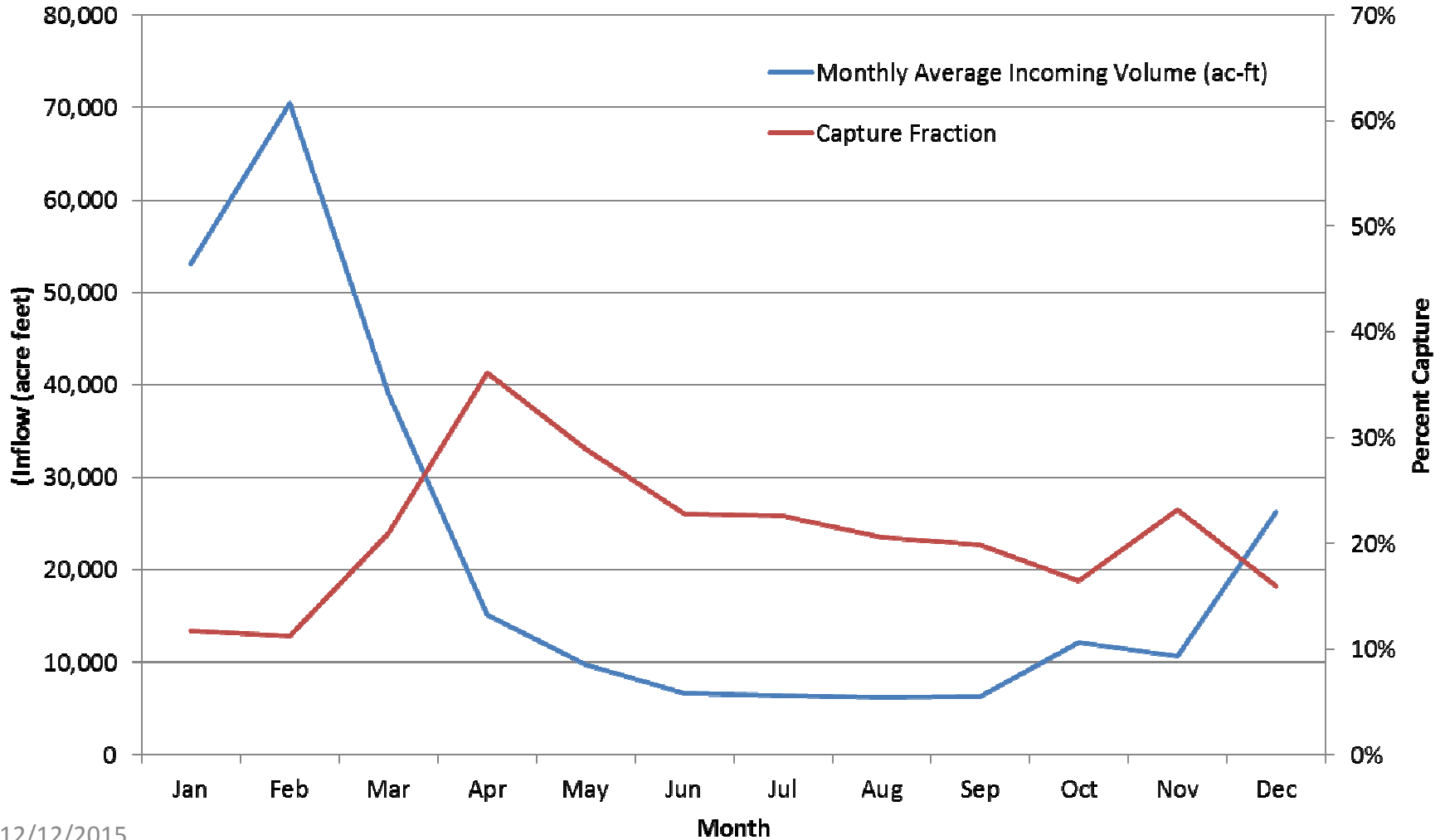
# Monthly Summary

250 CFS Wet Weather; No Dry Weather; No Storage

Monthly	Incoming Volume (ac-ft)	Flow Downstream (ac-ft)	Captured Volume (ac-ft)	Capture Fraction
Jan	53,103	46,901	6,205	12%
Feb	70,480	62,506	7,946	11%
Mar	38,983	30,845	8,182	21%
Apr	15,103	9,687	5,451	36%
May	9,737	6,918	2,818	29%
Jun	6,645	5,139	1,514	23%
Jul	6,365	4,927	1,438	23%
Aug	6,203	4,927	1,277	21%
Sep	6,302	5,054	1,251	20%
Oct	12,095	10,082	1,991	16%
Nov	10,700	8,227	2,479	23%
Dec	26,281	22,050	4,184	16%

# Monthly Summary

250 CFS Wet Weather; No Dry Weather; No Storage



Wet Weather Analysis #2  
250 CFS Wet Weather Capture  
No Dry Weather Capture  
10,000 Acre Feet of Storage

DRAFT – FOR DISCUSSION PURPOSES ONLY

~74,000AF OF CAPTURE  
AFTER STORAGE COMES  
ON LINE

# Annual Summary

250 CFS Wet Weather; No Dry Weather; 10KAF Storage

Year	Incoming Volume (ac-ft)	Flow Downstream (ac-ft)	Captured Volume (ac-ft)	Capture Fraction
1987	155,301	86,908	63,887	41%
1988	174,250	84,963	85,283	49%
1989	101,137	58,942	50,561	50%
1990	119,705	65,897	53,947	45%
1991	233,017	162,982	60,053	26%
1992	505,451	408,248	97,044	19%
1993	610,658	529,823	90,981	15%
1994	131,878	64,306	66,263	50%
1995	508,090	416,808	92,583	18%
1996	235,300	139,228	86,225	37%
1997	187,260	118,385	73,073	39%
1998	541,530	443,981	103,202	19%
1999	115,455	59,190	55,940	48%
2000	205,220	130,676	74,870	36%
2001	258,553	169,034	89,513	35%
2002	114,383	67,590	39,642	35%
2003	209,167	132,382	79,387	38%
2004	276,323	194,834	75,736	27%
2005	667,818	571,515	96,095	14%
2006	172,902	107,152	76,266	44%
2007	94,986	56,905	37,693	40%
2008	234,016	159,312	67,943	29%
2009	148,063	90,379	62,099	42%
2010	302,277	209,035	85,897	28%
2011	247,239	164,506	92,818	38%
12/Total 2015	<b>6,549,979</b>	<b>4,692,981</b>	<b>1,856,998</b>	<b>28%</b>
<b>Average</b>	<b>261,999</b>	<b>187,719</b>	<b>74,280</b>	<b>28%</b>

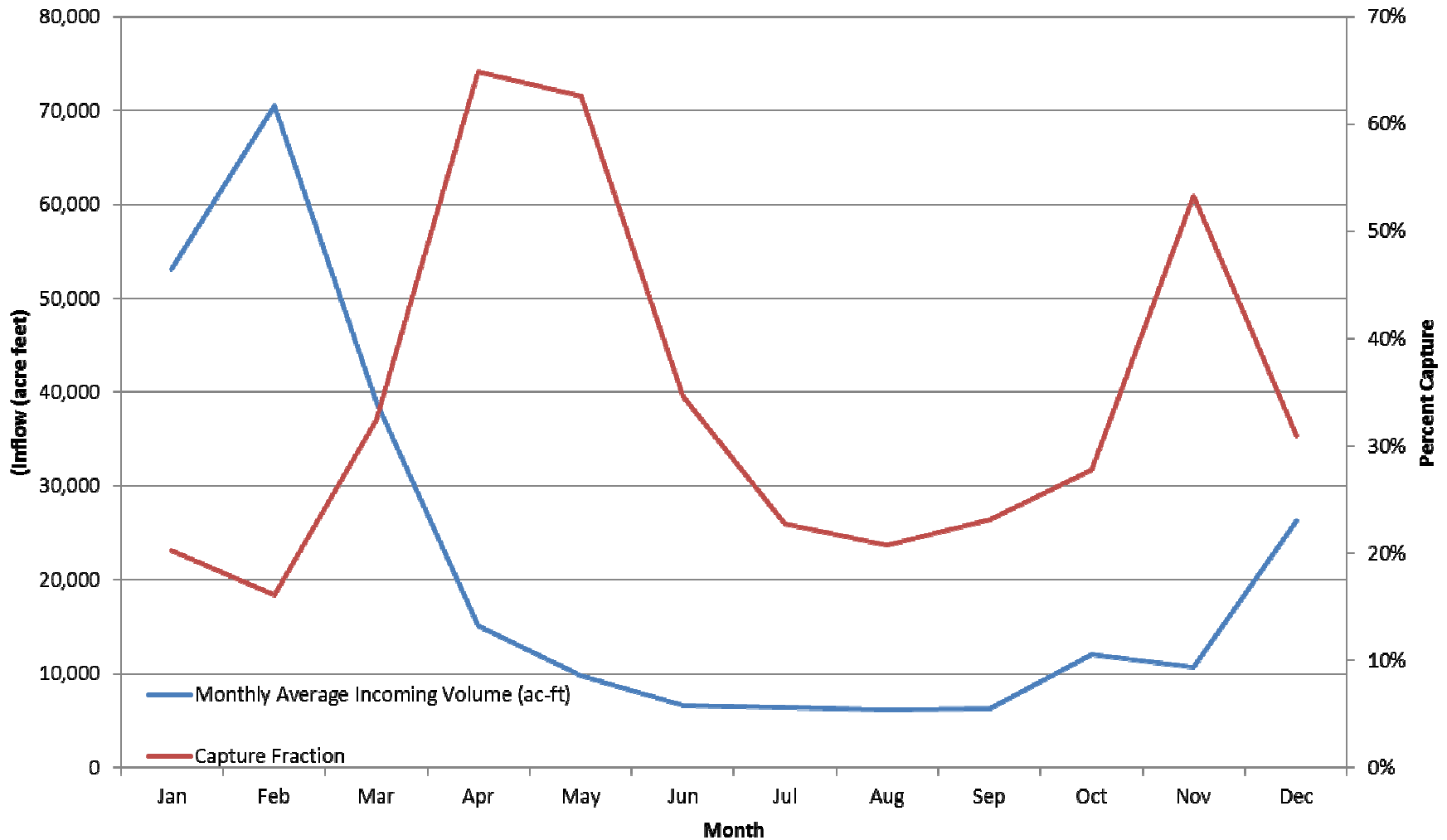
# Monthly Summary

250 CFS Wet Weather; No Dry Weather Flow; 10KAF Storage

Monthly	Incoming Volume (ac-ft)	Flow Downstream (ac-ft)	Captured Volume (ac-ft)	Capture Fraction
Jan	53,103	42,103	10,727	20%
Feb	70,480	55,967	11,335	16%
Mar	38,983	29,155	12,651	32%
Apr	15,103	7,093	9,800	65%
May	9,737	6,203	6,091	63%
Jun	6,645	4,754	2,301	35%
Jul	6,365	4,919	1,446	23%
Aug	6,203	4,919	1,285	21%
Sep	6,302	4,758	1,454	23%
Oct	12,095	7,147	3,353	28%
Nov	10,700	5,147	5,699	53%
Dec	26,281	15,556	8,138	31%

# Monthly Summary

250 CFS Wet Weather; No Dry Weather Flow; 10KAF Storage





Dry/Wet Weather Analysis #1  
250 CFS Maximum Diversion Rate  
80 CFS Dry Weather Capture  
Up To 170 CFS Wet Weather Capture  
No Storage

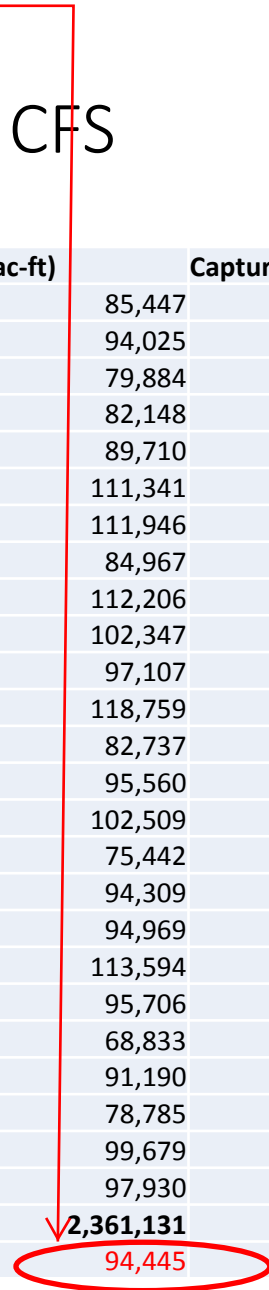
DRAFT – FOR DIS

~94,000AF OF INITIAL CAPTURE BEFORE FULL STORAGE COMES ON LINE

# Annual Summary

## 250 CFS Max; 80 CFS Dry Weather; Up To 170 CFS Wet Weather; No Storage

Year	Incoming Volume (ac-ft)	Flow Downstream (ac-ft)	Captured Volume (ac-ft)	Capture Fraction
1987	155,301	69,847	85,447	55%
1988	174,250	80,183	94,025	54%
1989	101,137	21,201	79,884	79%
1990	119,705	37,656	82,148	69%
1991	233,017	143,269	89,710	38%
1992	505,451	393,991	111,341	22%
1993	610,658	498,871	111,946	18%
1994	131,878	46,910	84,967	64%
1995	508,090	395,882	112,206	22%
1996	235,300	132,853	102,347	43%
1997	187,260	90,248	97,107	52%
1998	541,530	422,778	118,759	22%
1999	115,455	32,674	82,737	72%
2000	205,220	109,704	95,560	47%
2001	258,553	156,041	102,509	40%
2002	114,383	38,938	75,442	66%
2003	209,167	114,796	94,309	45%
2004	276,323	181,107	94,969	34%
2005	667,818	553,989	113,594	17%
2006	172,902	77,745	95,706	55%
2007	94,986	26,153	68,833	72%
2008	234,016	142,823	91,190	39%
2009	148,063	69,270	78,785	53%
2010	302,277	202,517	99,679	33%
2011	247,239	149,401	97,930	40%
<b>Total</b>	<b>6,549,979</b>	<b>4,188,848</b>	<b>2,361,131</b>	<b>36%</b>
<b>Average</b>	<b>261,999</b>	<b>167,554</b>	<b>94,445</b>	<b>36%</b>



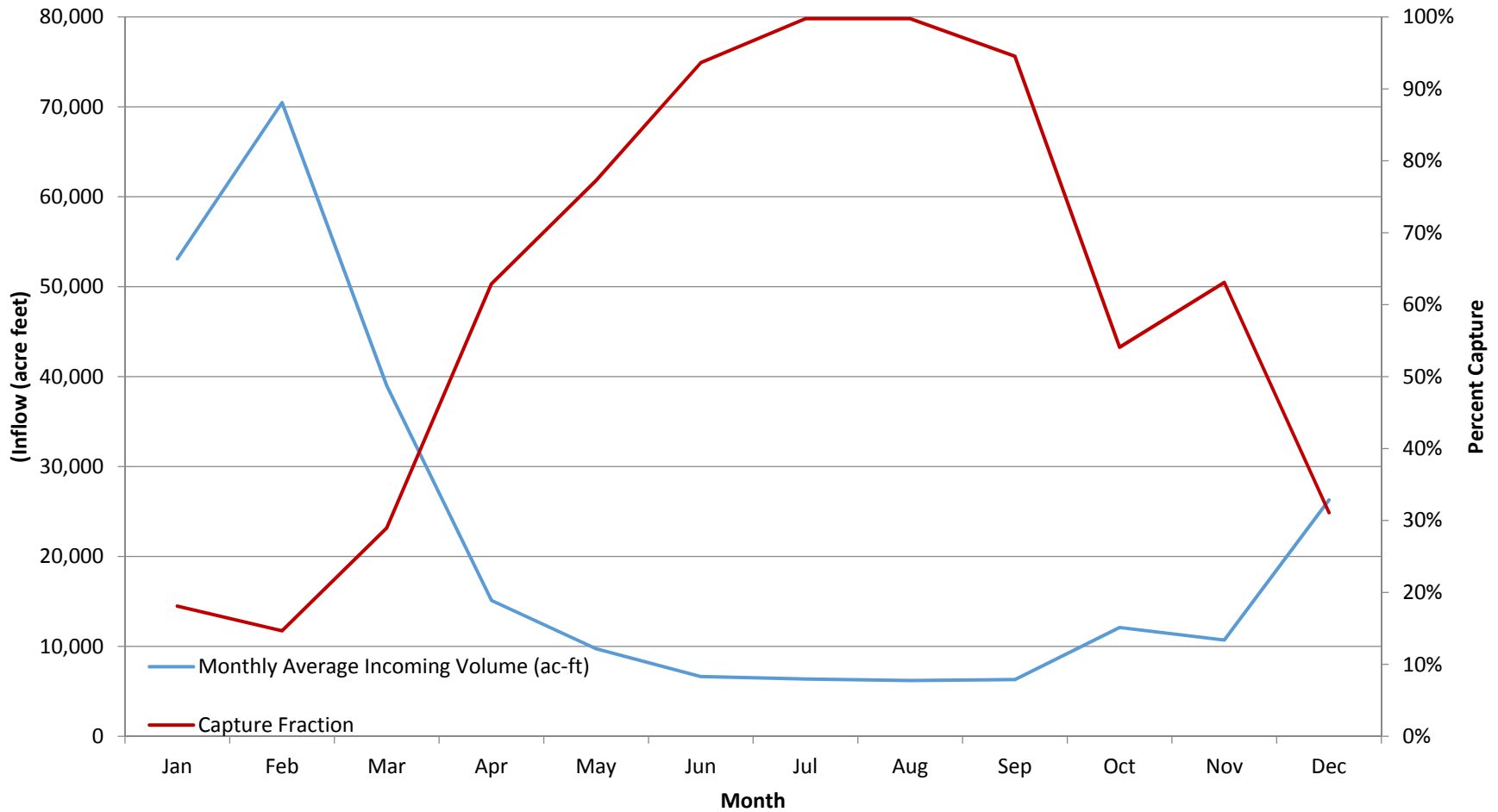
# Monthly Summary

250 CFS Max; 80 CFS Dry Weather; Up To 170 CFS  
Wet Weather; No Storage

Monthly	Incoming Volume (ac-ft)	Flow Downstream (ac-ft)	Captured Volume (ac-ft)	Capture Fraction
Jan	53,103	43,497	9,610	18%
Feb	70,480	60,111	10,343	15%
Mar	38,983	27,734	11,291	29%
Apr	15,103	5,637	9,500	63%
May	9,737	2,213	7,522	77%
Jun	6,645	430	6,222	94%
Jul	6,365	16	6,349	100%
Aug	6,203	16	6,188	100%
Sep	6,302	346	5,958	95%
Oct	12,095	5,532	6,542	54%
Nov	10,700	3,954	6,752	63%
Dec	26,281	18,068	8,168	31%

# Monthly Summary

250 CFS Max; 80 CFS Dry Weather; Up To 170 CFS Wet Weather; No Storage



## Dry/Wet Weather Analysis #2

250 CFS Maximum Diversion Rate

80 CFS Dry Weather Capture

Up To 170 CFS Wet Weather Capture

10,000 Acre Feet of Storage

DRAFT – FOR DISCUSSION  
 ~121,000AF OF CAPTURE  
 AFTER STORAGE COMES  
 ON LINE

# Annual Summary

250 CFS Max; 80 CFS Dry Weather; Up To 170 CFS  
 Wet Weather; 10KAF Storage

Year	Incoming Volume (ac-ft)	Flow Downstream (ac-ft)	Captured Volume (ac-ft)	Capture Fraction
1987	155,301	36,495	110,217	71%
1988	174,250	44,532	128,903	74%
1989	101,137	5,866	104,520	103%
1990	119,705	11,411	108,448	91%
1991	233,017	112,009	110,990	48%
1992	505,451	370,319	135,012	27%
1993	610,658	487,142	133,655	22%
1994	131,878	14,479	114,719	87%
1995	508,090	377,653	131,889	26%
1996	235,300	95,557	130,888	56%
1997	187,260	72,595	117,191	63%
1998	541,530	410,014	139,073	26%
1999	115,455	5,315	109,646	95%
2000	205,220	84,627	121,087	59%
2001	258,553	126,041	130,150	50%
2002	114,383	13,507	94,471	83%
2003	209,167	87,836	124,190	59%
2004	276,323	145,772	126,163	46%
2005	667,818	531,356	136,240	20%
2006	172,902	57,647	125,771	73%
2007	94,986	0	92,437	97%
2008	234,016	116,372	111,593	48%
2009	148,063	37,069	114,089	77%
2010	302,277	165,520	132,191	44%
2011	247,239	118,901	138,410	56%
<b>Total</b>	<b>6,549,979</b>	<b>3,528,034</b>	<b>3,021,946</b>	<b>46%</b>
<b>Average</b>	<b>261,999</b>	<b>141,121</b>	<b>120,878</b>	<b>46%</b>

3,021,946  
 120,878

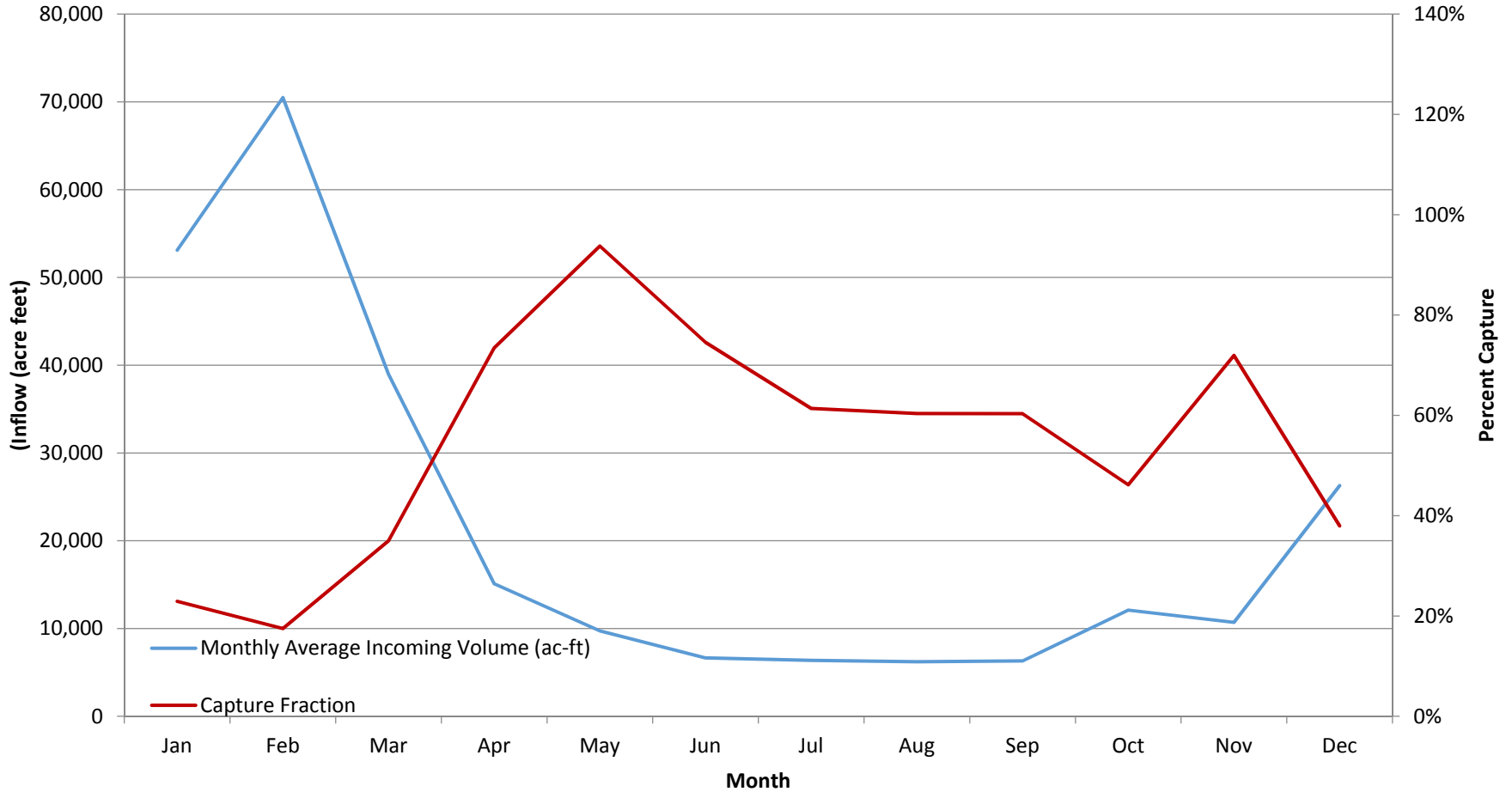
# Monthly Summary

250 CFS Max; 80 CFS Dry Weather; Up To 170 CFS  
Wet Weather; 10KAF Storage

Monthly	Incoming Volume (ac-ft)	Flow Downstream (ac-ft)	Captured Volume (ac-ft)	Capture Fraction
Jan	53,103	39,182	13,416	25%
Feb	70,480	54,693	13,061	19%
Mar	38,983	26,573	14,496	37%
Apr	15,103	3,898	12,432	82%
May	9,737	1,628	11,427	117%
Jun	6,645	0	8,101	122%
Jul	6,365	0	6,503	102%
Aug	6,203	0	6,204	100%
Sep	6,302	0	6,153	98%
Oct	12,095	2,414	7,802	65%
Nov	10,700	511	9,740	91%
Dec	26,281	12,222	11,544	44%

# Monthly Summary

250 CFS Max; 80 CFS Dry Weather; Up To 170 CFS Wet Weather; 10KAF Storage





## Dry/Wet Weather Analysis #3

250 CFS Maximum Diversion Rate

40 CFS Dry Weather Capture

Up To 170 CFS Wet Weather Capture

No Storage

DRAFT – FOR DISCUSSION

~70,000AF OF INITIAL CAPTURE BEFORE FULL STORAGE COMES ON LINE

# Annual Summary

## 250 CFS Max; 40 CFS Dry Weather; Up To 170 CFS Wet Weather; No Storage

Year	Incoming Volume (ac-ft)	Flow Downstream (ac-ft)	Captured Volume (ac-ft)	Capture Fraction
1987	155,301	95,963	59,329	38%
1988	174,250	105,758	68,450	39%
1989	101,137	48,410	52,674	52%
1990	119,705	64,752	55,055	46%
1991	233,017	168,421	64,561	28%
1992	505,451	415,885	89,440	18%
1993	610,658	519,783	91,039	15%
1994	131,878	73,196	58,681	44%
1995	508,090	416,536	91,552	18%
1996	235,300	156,926	78,271	33%
1997	187,260	115,082	72,276	39%
1998	541,530	443,071	98,467	18%
1999	115,455	59,113	56,297	49%
2000	205,220	134,819	70,446	34%
2001	258,553	180,116	78,433	30%
2002	114,383	66,357	48,023	42%
2003	209,167	140,839	68,264	33%
2004	276,323	205,957	70,116	25%
2005	667,818	574,869	92,713	14%
2006	172,902	103,048	70,411	41%
2007	94,986	53,665	41,321	44%
2008	234,016	168,000	66,014	28%
2009	148,063	96,039	52,016	35%
2010	302,277	226,224	75,970	25%
2011	247,239	173,809	73,525	30%
<b>Total</b>	<b>6,549,979</b>	<b>4,806,636</b>	<b>1,743,344</b>	<b>27%</b>
<b>Average</b>	<b>261,999</b>	<b>192,265</b>	<b>69,734</b>	<b>27%</b>



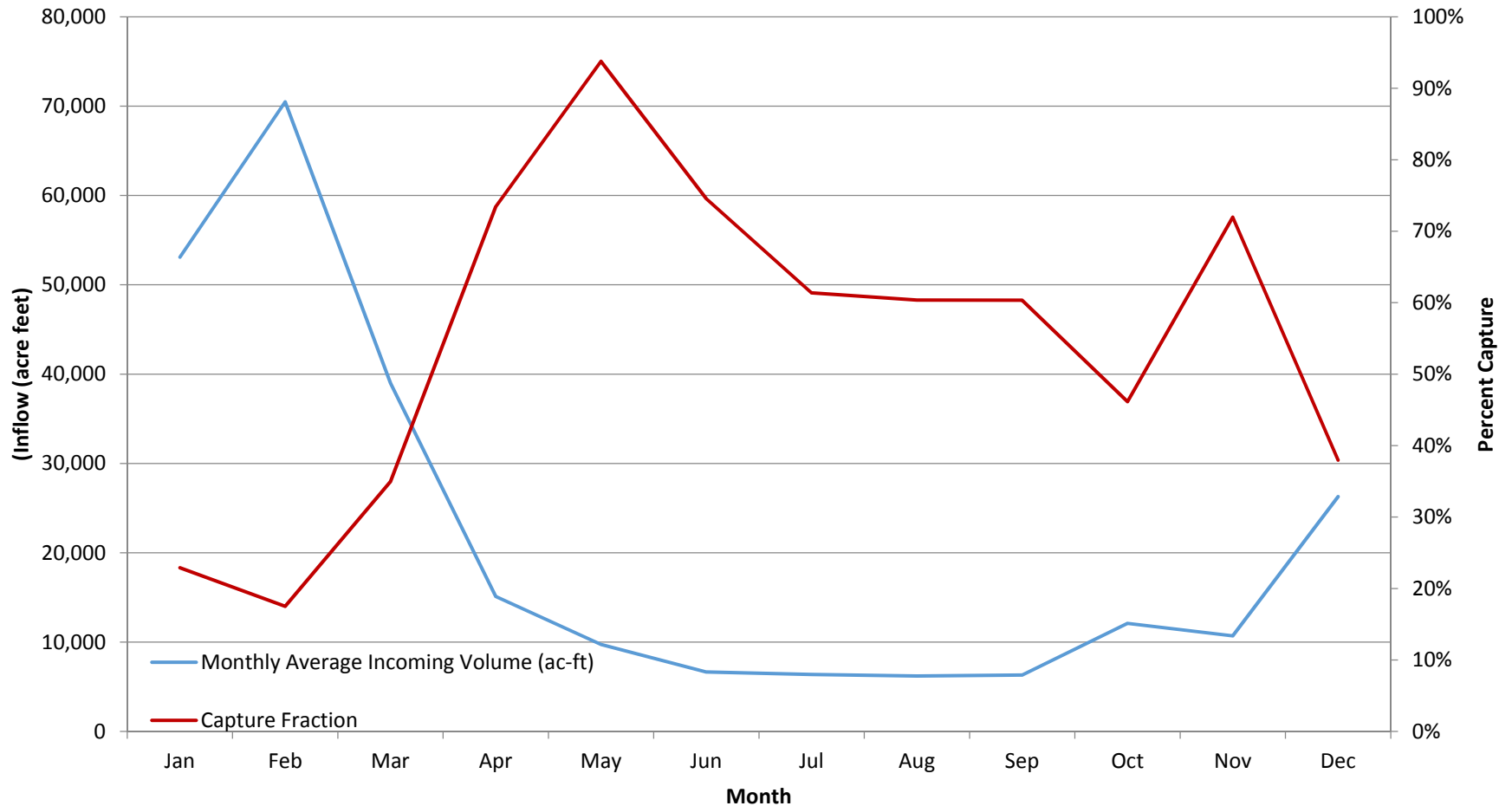
# Monthly Summary

250 CFS Max; 40 CFS Dry Weather; Up To 170 CFS  
Wet Weather; No Storage

Monthly	Incoming Volume (ac-ft)	Flow Downstream (ac-ft)	Captured Volume (ac-ft)	Capture Fraction
Jan	53,103	45,182	7,925	15%
Feb	70,480	61,285	9,168	13%
Mar	38,983	29,243	9,783	25%
Apr	15,103	7,631	7,506	50%
May	9,737	4,557	5,178	53%
Jun	6,645	2,787	3,865	58%
Jul	6,365	2,470	3,895	61%
Aug	6,203	2,470	3,734	60%
Sep	6,302	2,698	3,606	57%
Oct	12,095	7,804	4,269	35%
Nov	10,700	6,089	4,617	43%
Dec	26,281	20,049	6,187	24%

# Monthly Summary

250 CFS Max; 40 CFS Dry Weather; Up To 170 CFS Wet Weather; No Storage



Dry/Wet Weather Analysis #4  
250 CFS Maximum Diversion Rate  
40 CFS Dry Weather Capture  
Up To 170 CFS Wet Weather Capture  
10,000 Acre Feet of Storage

DRAFT – FOR DISCUSSION  
 ~98,000AF OF CAPTURE  
 AFTER STORAGE COMES  
 ON LINE

# Annual Summary

250 CFS Max; 40 CFS Dry Weather; Up To 170 CFS  
 Wet Weather; 10K AF Storage

Year	Incoming Volume (ac-ft)	Flow Downstream (ac-ft)	Captured Volume (ac-ft)	Capture Fraction
1987	155,301	60,755	87,040	56%
1988	174,250	64,853	107,944	62%
1989	101,137	31,156	78,791	78%
1990	119,705	37,288	82,565	69%
1991	233,017	137,486	85,516	37%
1992	505,451	389,218	116,108	23%
1993	610,658	508,401	112,399	18%
1994	131,878	39,376	90,533	69%
1995	508,090	397,280	112,683	22%
1996	235,300	117,276	108,047	46%
1997	187,260	95,521	95,196	51%
1998	541,530	426,880	121,265	22%
1999	115,455	31,875	83,172	72%
2000	205,220	107,471	98,158	48%
2001	258,553	146,879	111,391	43%
2002	114,383	39,605	67,088	59%
2003	209,167	110,139	101,771	49%
2004	276,323	168,952	102,300	37%
2005	667,818	550,753	116,847	17%
2006	172,902	82,387	101,033	58%
2007	94,986	28,959	64,559	68%
2008	234,016	137,161	90,136	39%
2009	148,063	63,526	88,601	60%
2010	302,277	185,738	110,589	37%
2011	247,239	140,303	117,011	47%
<b>Total</b>	<b>6,549,979</b>	<b>4,099,237</b>	<b>2,450,743</b>	<b>37%</b>
<b>Average</b>	<b>261,999</b>	<b>163,969</b>	<b>98,030</b>	<b>37%</b>



# Monthly Summary

250 CFS Max; 40 CFS Dry Weather; Up To 170 CFS  
Wet Weather; 10K AF Storage

Monthly	Incoming Volume (ac-ft)	Flow Downstream (ac-ft)	Captured Volume (ac-ft)	Capture Fraction
1	53,103	40,620	12,168	23%
2	70,480	55,165	12,340	18%
3	38,983	27,846	13,635	35%
4	15,103	5,364	11,092	73%
5	9,737	3,916	9,130	94%
6	6,645	2,380	4,953	75%
7	6,365	2,460	3,905	61%
8	6,203	2,460	3,744	60%
9	6,302	2,380	3,803	60%
10	12,095	4,785	5,581	46%
11	10,700	2,841	7,700	72%
12	26,281	13,752	9,977	38%

# Monthly Summary

250 CFS Max; 40 CFS Dry Weather; Up To 170 CFS Wet Weather; 10K AF Storage

